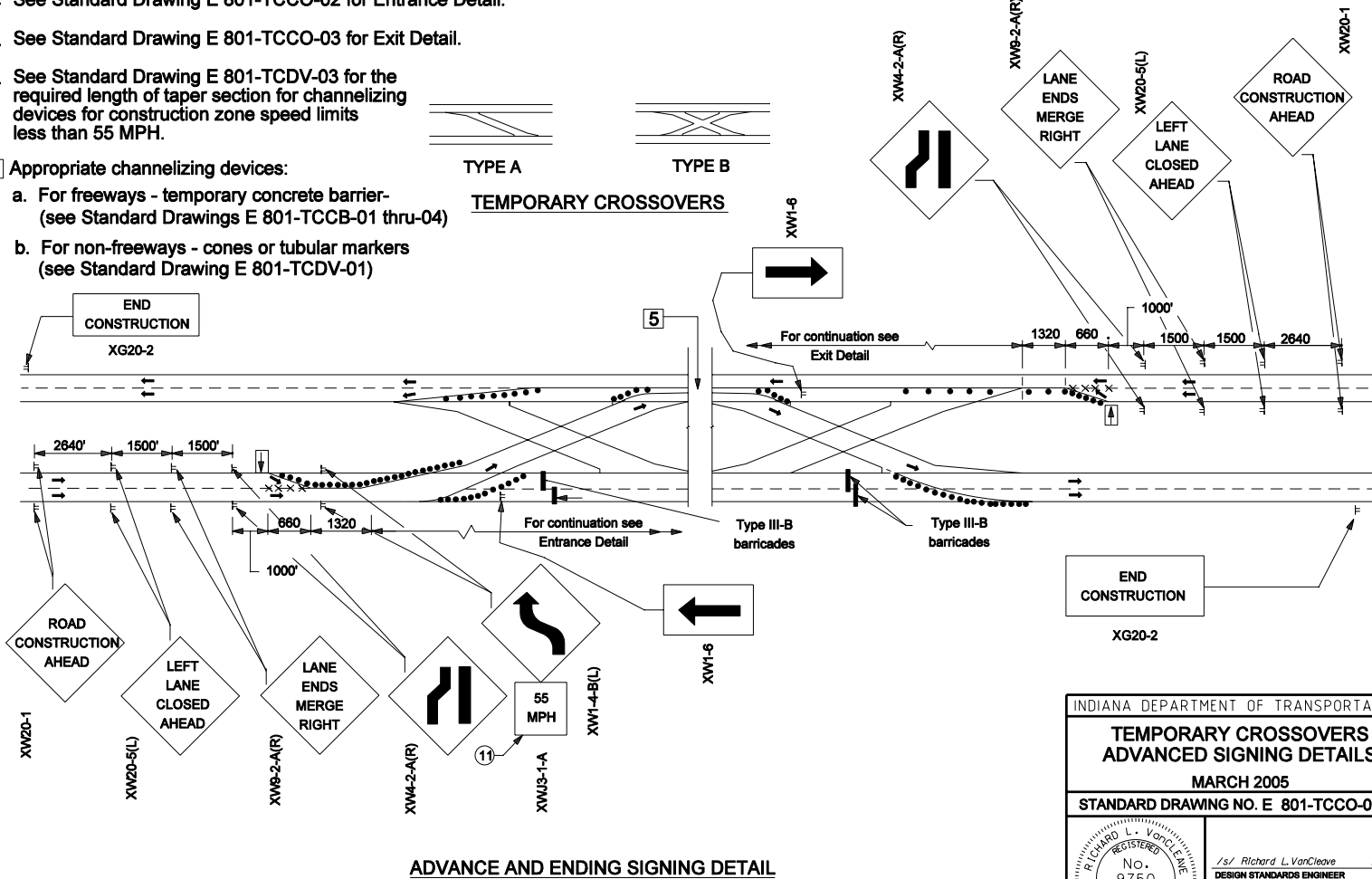
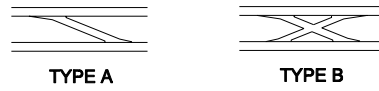


NOTES

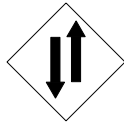
1. See Standard Drawings E801-TCCO-02 and E 801-TCLG-01 for additional general notes and legend.
2. See Standard Drawing E 801-TCCO-02 for Entrance Detail.
3. See Standard Drawing E 801-TCCO-03 for Exit Detail.
4. See Standard Drawing E 801-TCDV-03 for the required length of taper section for channelizing devices for construction zone speed limits less than 55 MPH.

6. Area of Type A crossovers are shown on Standard Drawing E 801-TCLG-01 and area of Type B crossover is shown on Standard Drawing E 801-TCCO-05.

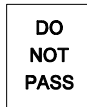
- 5] Appropriate channelizing devices:
- a. For freeways - temporary concrete barrier-
(see Standard Drawings E 801-TCCB-01 thru-04)
 - b. For non-freeways - cones or tubular markers
(see Standard Drawing E 801-TCDV-01)



INDIANA DEPARTMENT OF TRANSPORTATION	
TEMPORARY CROSSOVERS ADVANCED SIGNING DETAILS	
MARCH 2005	
STANDARD DRAWING NO. E 801-TCCO-01	
	/s/ Richard L. VanCleave 3-01-05 DESIGN STANDARDS ENGINEER DATE
	/s/ Richard K. Smutzer 3-01-05 CHIEF HIGHWAY ENGINEER DATE
DESIGN STANDARDS ENGINEER	



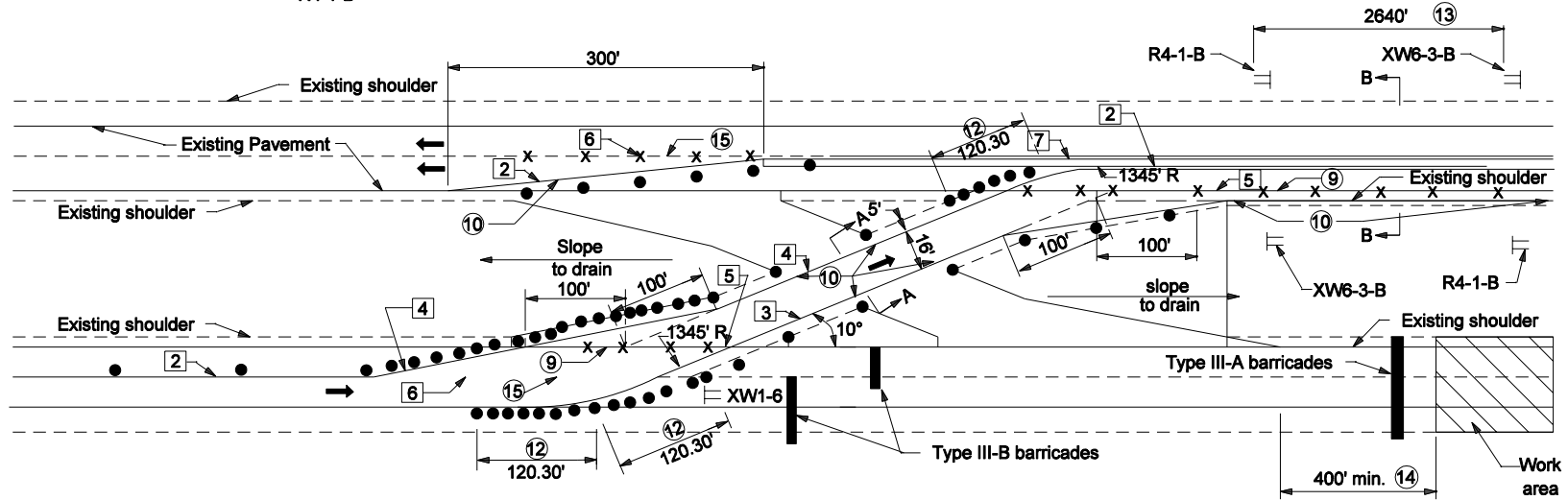
XW6-3-B



R4-1-B



XW1-6



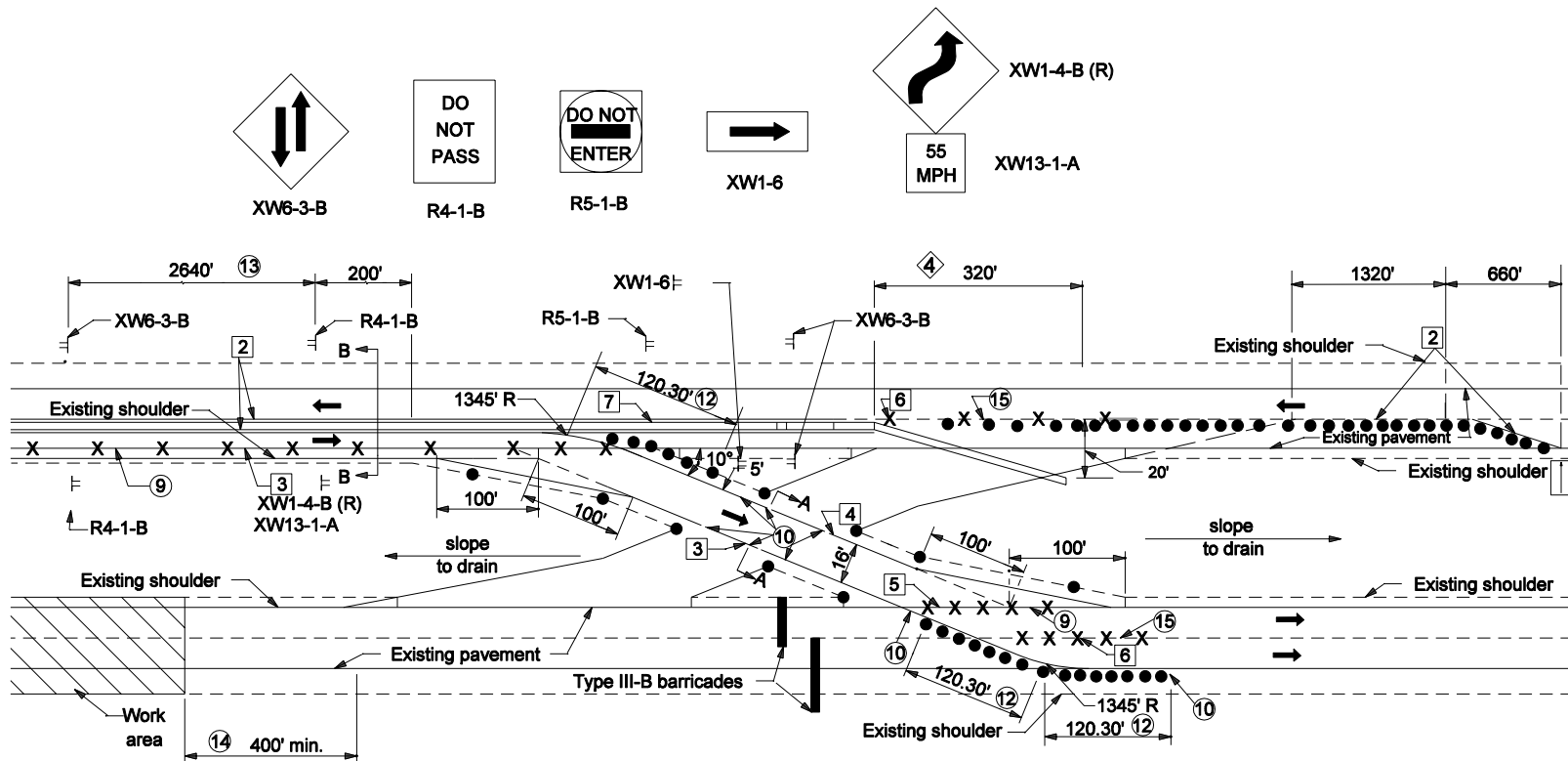
NOTES:

1. Signs XW6-3-B and R4-1-B shall be used only with temporary channelizing devices.
2. See Standard Drawing E 801-TCCO-07 for Sections, A-A , B-B.
3. See Standard Drawings E 801-TCDV-04 thru E 801-TCDV-07 for barricade and construction sign mounting information.
4. For channelization devices see Standard Drawing E 801-TCDV-01.
5. See Standard Drawing E 801-TCDV-03 for required length of taper section for channelizing devices when construction zone speed limits are less than 55 MPH.
6. See Standard Drawing E 801-TCLG-01 for General Notes and additional Legend Symbols

LEGEND

- 1 Temporary Pavement Marking, White, 4"
- 2 Temporary Pavement Marking, Yellow, 4"
- 3 Temporary Pavement Marking, White, 8"
- 4 Temporary Pavement Marking, Yellow, 8"
- 5 Line, Solid Yellow, 4", Remove
- 6 Line, Broken White, 4" Remove
- 7 Temporary Concrete Barrier - Freeways
Channelizing Devices - Non-Freeway Multi-lane
Divided Roadways.

INDIANA DEPARTMENT OF TRANSPORTATION	
TEMPORARY CROSSOVERS ENTRANCE DETAIL	
MARCH 2006	
STANDARD DRAWING NO. E 801-TCCO-02	
	/s/ Richard L. VanCleave DESIGN STANDARDS ENGINEER 3-01-06 DATE
	/s/ Richard K. Smutzer CHIEF HIGHWAY ENGINEER 3-01-06 DATE
DESIGN STANDARDS ENGINEER	



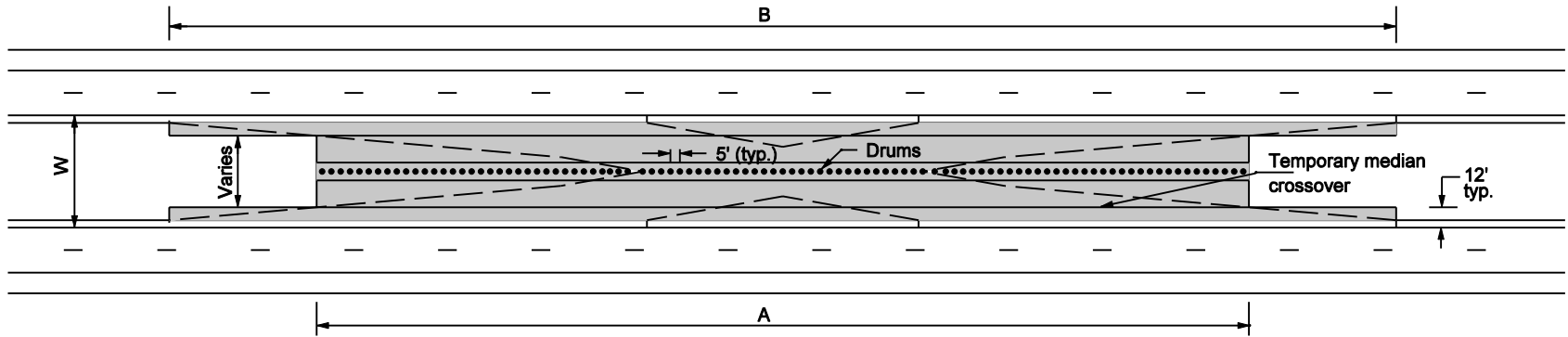
NOTES

1. Signs XW6-3-B and R4-1-B shall be used only with temporary channelizing devices.
2. See Standard Drawing E 801-TCCO-07 for Sections, A-A, B-B.
3. See Standard Drawing E 801-TC DV-03 for required length of taper section for channelizing devices for construction zone speed limits less than 55 MPH.
4. Taper required when channelizing device is temporary concrete barrier, see Standard Drawing E 801-TCCB-01.
5. See Standard Drawing E 801-TCCO-02 for Legend.
6. See Standard Drawing E 801-TCLG-01 for General Notes and additional Legend Symbols.

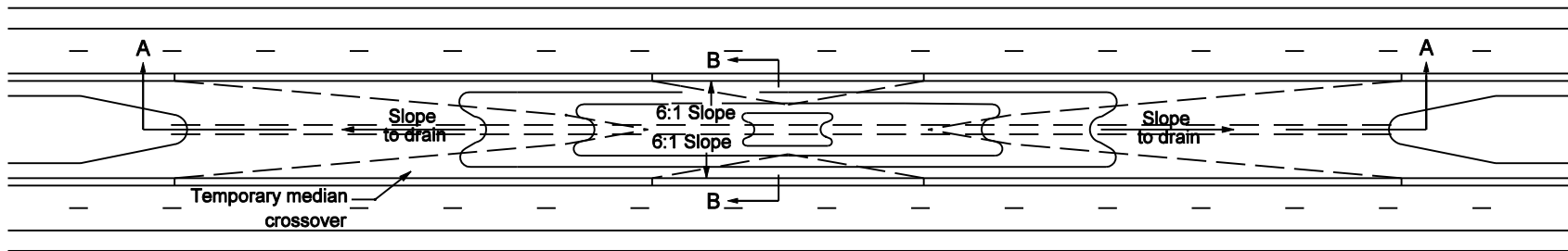
INDIANA DEPARTMENT OF TRANSPORTATION	
TEMPORARY CROSSOVERS EXIT DETAIL	
MARCH 2006	
STANDARD DRAWING NO. E 801-TCCO-03	
	/s/ Richard L. VanCleave 3-01-06 DESIGN STANDARDS ENGINEER DATE
	/s/ Richard K. Smutzer 3-01-06 CHIEF HIGHWAY ENGINEER DATE
DESIGN STANDARDS ENGINEER	

NOTES

1. See Standard Drawing E 801-TCCO-06 for Sections A-A and B-B.
2. Pave to drain.



PAVING LIMITS AND DRUM CLOSURE



EARTH COVER CLOSURE

TYPE B CROSS OVER

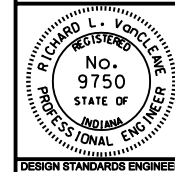
Median Width W	Dimension A	Dimension B	Area of Paving strips
Feet	Feet	Feet	SQ. Yards
60	564	833	4310
50	505	774	3380
40	449	719	2605
36	427	696	2326
30	390	659	1930
26	371	640	1750

INDIANA DEPARTMENT OF TRANSPORTATION

**TEMPORARY CROSSOVER TYPE B
PAVING AND CLOSURE LAYOUT**

SEPTEMBER 2003

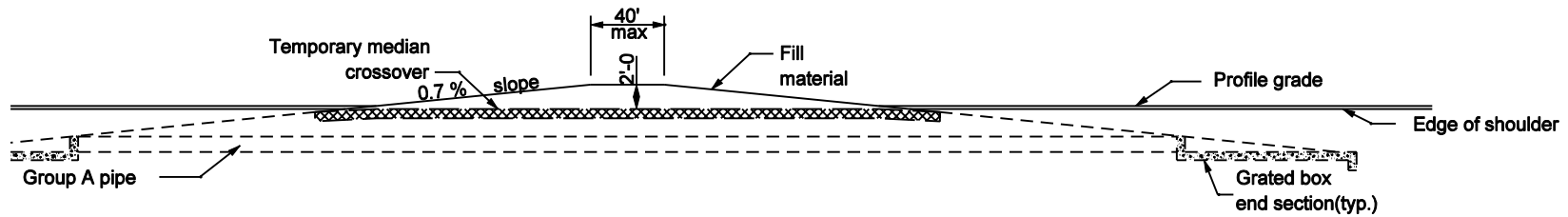
STANDARD DRAWING NO. E 801-TCCO-05



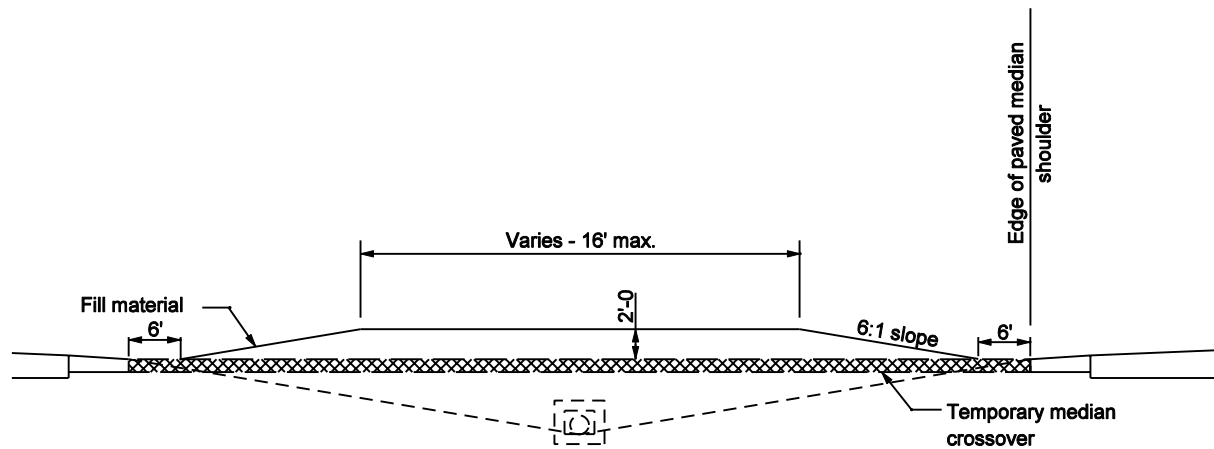
/s/ Richard L. VanCleave 9-02-03
DESIGN STANDARDS ENGINEER DATE

/s/ Richard K. Smutzer 9-02-03
CHIEF HIGHWAY ENGINEER DATE

DESIGN STANDARDS ENGINEER



SECTION A-A

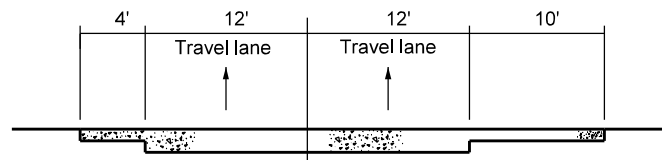
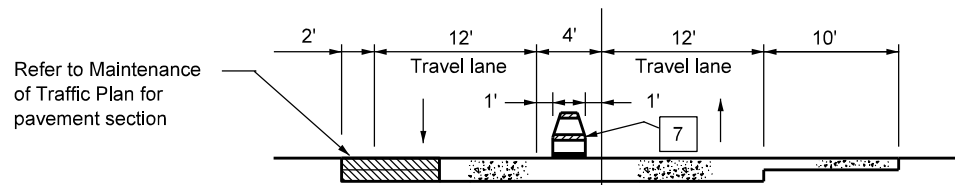
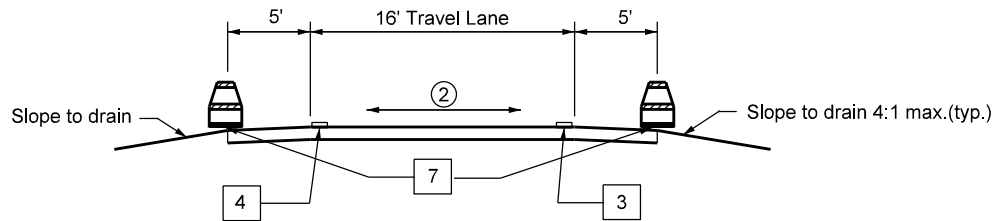


SECTION B-B

NOTES

1. See Standard Drawing E 801-TCCO-05 for temporary crossover paving and closure layout.

INDIANA DEPARTMENT OF TRANSPORTATION	
CLOSURE OF TEMPORARY CROSSOVER	
SEPTEMBER 2003	
STANDARD DRAWING NO. E 801-TCCO-06	
	/s/ Richard L. VanCleave 9-02-03 DESIGN STANDARDS ENGINEER DATE
	/s/ Richard K. Smutzer 9-02-03 CHIEF HIGHWAY ENGINEER DATE
DESIGN STANDARDS ENGINEER	



GENERAL NOTES:

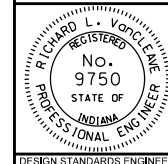
1. See Standard Drawing E 801-TCCO-02 for Legend.
- ② Cross slope varies.
3. Positive drainage shall be provided to prevent ponding on the travel lanes.

INDIANA DEPARTMENT OF TRANSPORTATION

**TEMPORARY CROSSOVER
TYPICAL SECTIONS**

MARCH 2006

STANDARD DRAWING NO. E 801-TCCO-07



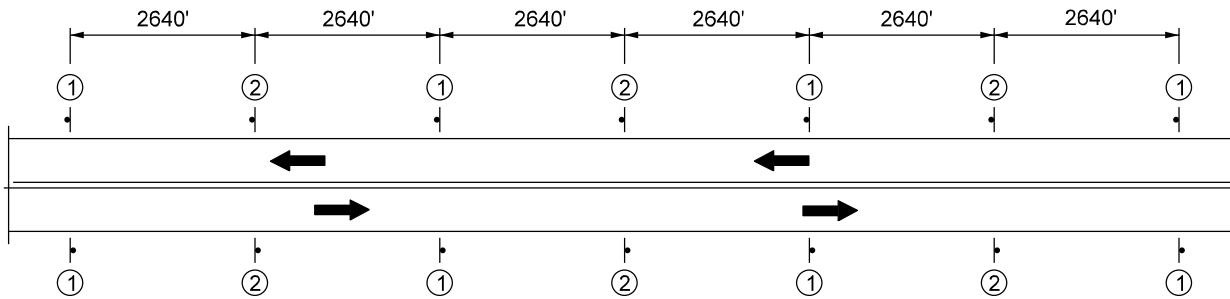
/s/ Richard L. VanCleave 3-01-06
DESIGN STANDARDS ENGINEER DATE

/s/ Richard K. Smutzer 3-01-06
CHIEF HIGHWAY ENGINEER DATE

DESIGN STANDARDS ENGINEER

GENERAL NOTES:

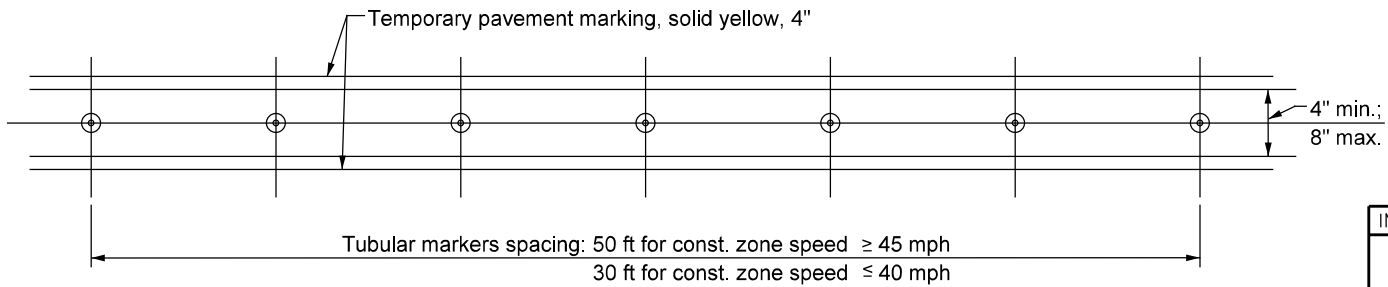
1. Signing pattern typical both sides of roadway, for each direction of travel.
2. See Standard Drawing E 801-TCDV-02 for tubular marker details.



CONSTRUCTION SIGNS LOCATION DETAIL

LEGEND

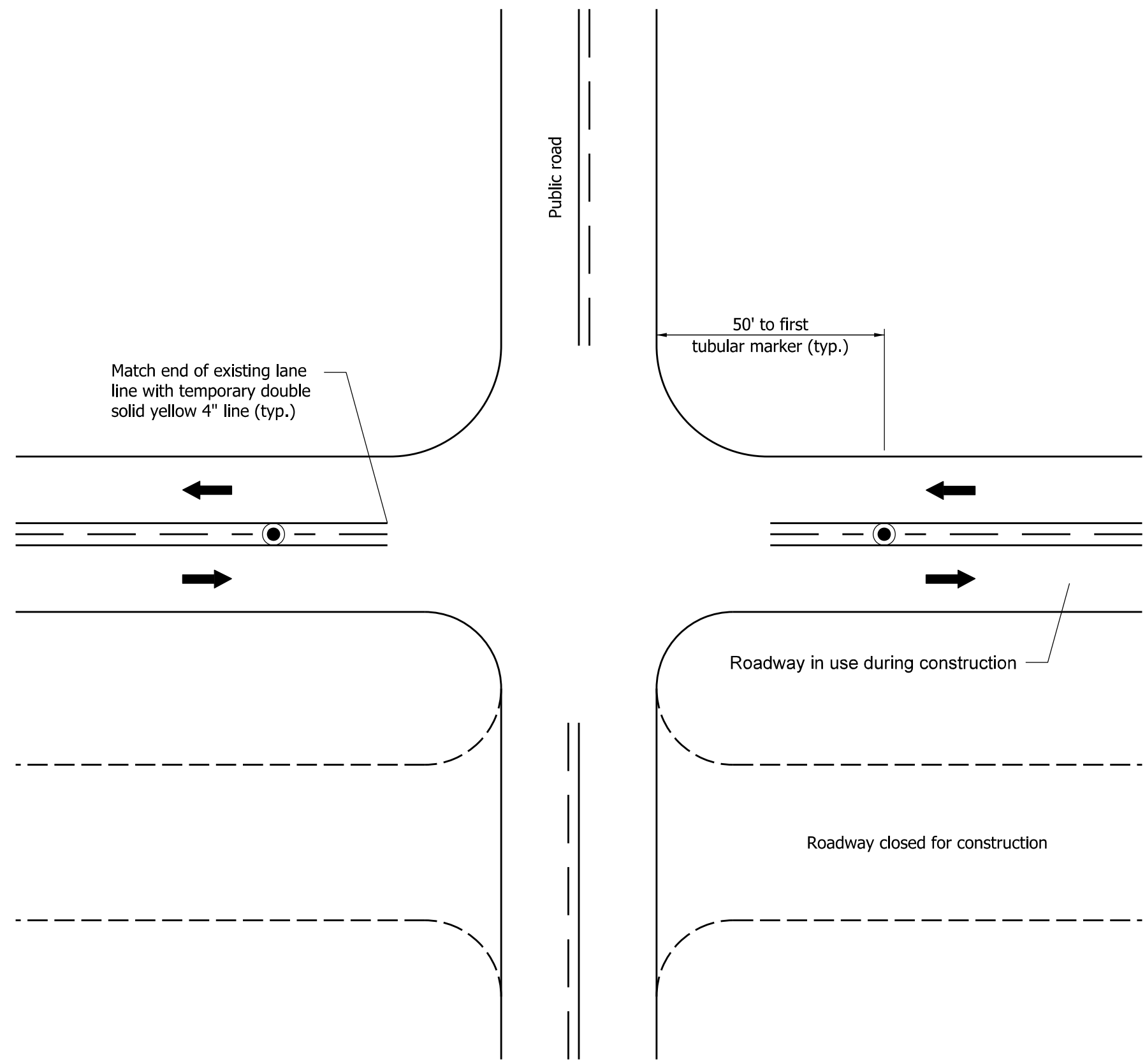
- ① R4-1-B "Do Not Pass"
- ② XW6-3 two-way traffic symbol
- Tubular markers



TUBULAR MARKERS ALONG CENTERLINE OF PAVEMENT LAYOUT

**TWO LANE, TWO WAY
OPPOSING TRAFFIC**

INDIANA DEPARTMENT OF TRANSPORTATION	
TUBULAR MARKER DELINEATION	
MARCH 2006	
STANDARD DRAWING NO. E 801-TCCO-08	
	/s/ <i>Richard L. VanCleave</i> 3-01-06 DESIGN STANDARDS ENGINEER DATE
	/s/ <i>Richard K. Smutzer</i> 3-01-06 CHIEF HIGHWAY ENGINEER DATE



GENERAL NOTES:

1. See Standard Drawing E 801-TCDV-02 for tubular marker details.

LEGEND

- Tubular markers

INDIANA DEPARTMENT OF TRANSPORTATION	
TUBULAR MARKER DELINEATION AT INTERSECTION SEPTEMBER 2007	
STANDARD DRAWING NO. E 801-TCCO-09	
	<i>/s/ Richard L. VanCleave</i> 09/04/07 <small>DESIGN STANDARDS ENGINEER DATE</small>
	<i>/s/ Mark A. Miller</i> 09/04/07 <small>CHIEF ENGINEER DATE</small>